

PONLINE-Master

Master Station



Master station PONLINE-Master

Central reception, visualization, storage and processing of condition and failure messages from RTU's type PONLINE-Butler, which are installed in the distribution network.

Complete PC-based system in 19" rack

Preinstalled modem and antenna included

Preinstalled system software PONLINE-WebView

Reception and processing of messages

After plausibility check and storage of the messages, they can be:

- forwarded as SMS according to user definable rules
- visualized in a topological sequence
- transmitted to an existing control center via IEC60870-5-101, -104 protocol

Fault messages from radial or closed loop networks

Differentiation between first and second fault is possible, useful for closed loop fault detection.

Command transmission

Transmission of single commands to RTUs (PONLINE-Butler) or multiple commands to groups of RTUs.

Command transmission initiated by the connected control center possible.

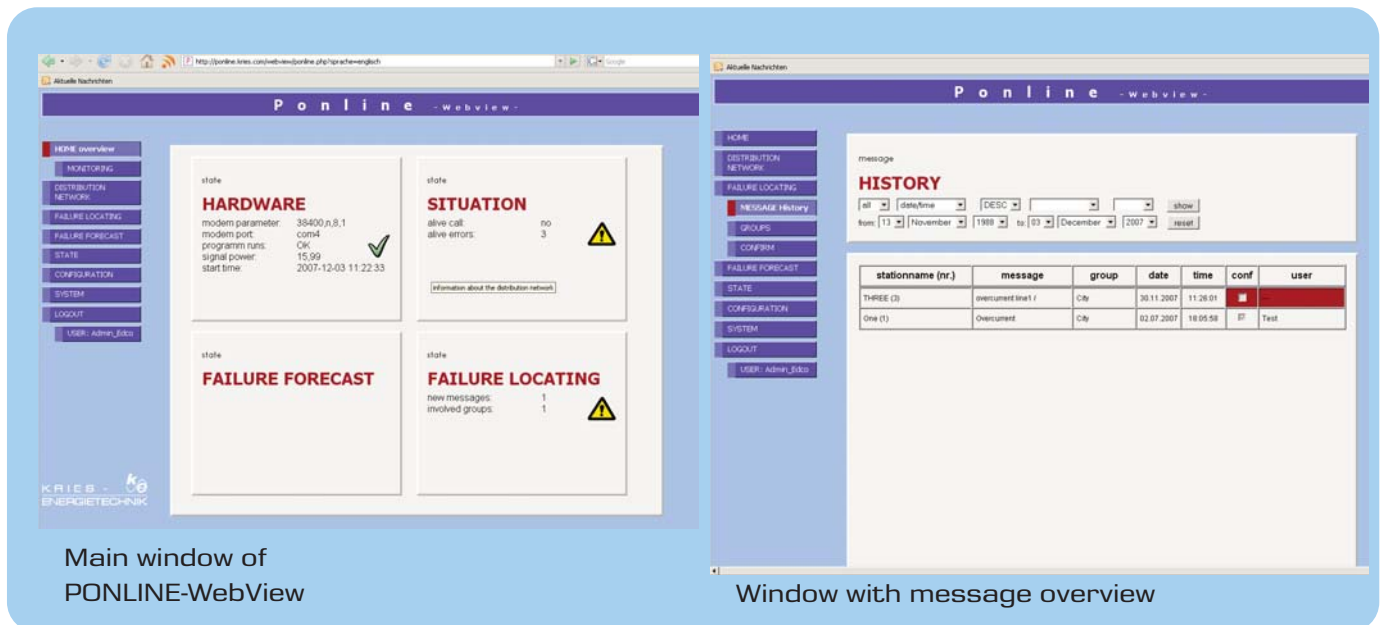


PONLINE



PONLINE-Master

Master Station



Technical data PONLINE-Master

Part number:	2500172
Power supply:	110/230 V AC, 45-55 Hz
Max. current:	2 A
Housing:	19" rack, 4 units high
System:	PC with Windows XP operating system, message storage in data base
Dimensions:	h x w x d = 45 x 431 x 650 mm
Weight:	15 kg
Operating temperature:	-10°C to +55°C
Storage temperature:	-25°C to +70°C
Protection class:	IP20
Requirements:	GSM SIM- card 3 V

Kries - Energietechnik GmbH & Co KG

Sandwiesen 19
D-71334 Waiblingen
www.kries.com

Telefon (++ 49) (0) 7151 96932 - 0
Telefax (++ 49) (0) 7151 96932-16
E - Mail service@kries.com

KRIES - 
ENERGIETECHNIK