

## Installation Devices

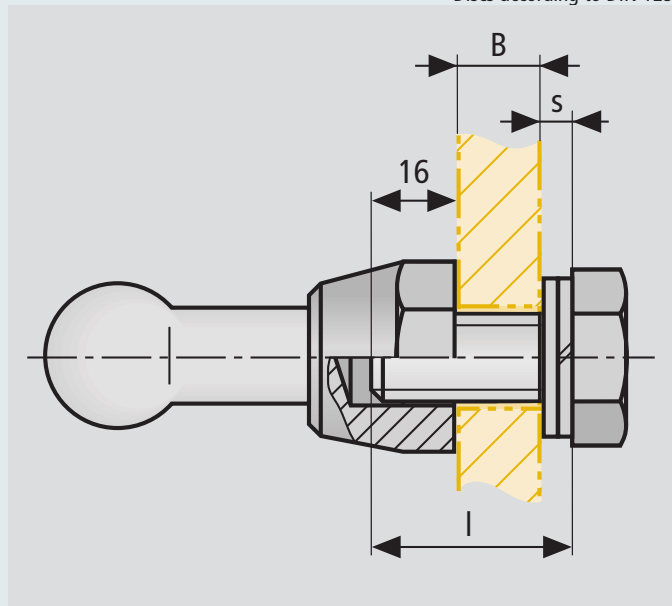
## SAFETY EQUIPMENT

### For fixed ball and earthing points

### EARTHING AND SHORT-CIRCUITING DEVICES

- Hexagon bolt for installation of busbar connections according to DIN 43673 Part 1
- Spring-loaded pressure plate for installing M12 or M16 fixed points on aluminium busbars

Hexagon bolts according to DIN 933  
Spring washers according to DIN 128  
Discs according to DIN 125



Determination of the required bolt length  $l$ .

#### Technical Data

|                   |                            |
|-------------------|----------------------------|
| Hexagon bolts     | StSt A2-70 (DIN 933)       |
| Spring washers    | StSt A2-70 (DIN 128)       |
| Discs             | StSt A2-70 (DIN 125)       |
| Pressure plate    | Highly resistant Al alloy  |
| Tightening torque | M12: 80 Nm;<br>M16: 150 Nm |

#### Determination of bolt length $l$

$$l \text{ (mm)} = B + s + 16$$

Important! Required bolt length  $< l$

$l$  = Bolt length

$B$  = Thickness of busbar

$s$  = Thickness of spring washer and disc



| Type   | Dimensions          | Part No. |
|--|---------------------|----------|
| <b>A Installation Device – Hexagon Bolts</b>   |                     |          |
| SKS M12 25 V2A   | M12 x 25 mm         | 561 925  |
| SKS M12 30 V2A   | M12 x 30 mm         | 561 930  |
| SKS M12 35 V2A   | M12 x 35 mm         | 561 935  |
| SKS M16 30 V2A   | M16 x 30 mm         | 561 931  |
| <b>B Installation Device – Spring Washers</b>  |                     |          |
| FR A12 V2A   | A12 ( $s = 2.4$ )   | 524 912  |
| FR A16 V2A   | A16 ( $s = 2.8$ )   | 524 913  |
| <b>C Installation Device – Discs</b>   |                     |          |
| SCH A13 V2A  | A13 ( $s = 2.4$ )   | 525 912  |
| SCH A17 V2A  | A17 ( $s = 3.0$ )   | 525 916  |
| <b>D Square spring-loaded Pressure Plate</b>   |                     |          |
| For reliable contact and permanent installation of fixed ball points on aluminium busbars. Pressure plates must be installed on both ends of the busbar. |                     |          |
| DP 40 40 B13 AL  | M12, 40 x 40 x 6 mm | 525 001  |
| DP 50 50 B17 AL  | M16, 50 x 50 x 8 mm | 525 002  |

Other lengths are available on request.